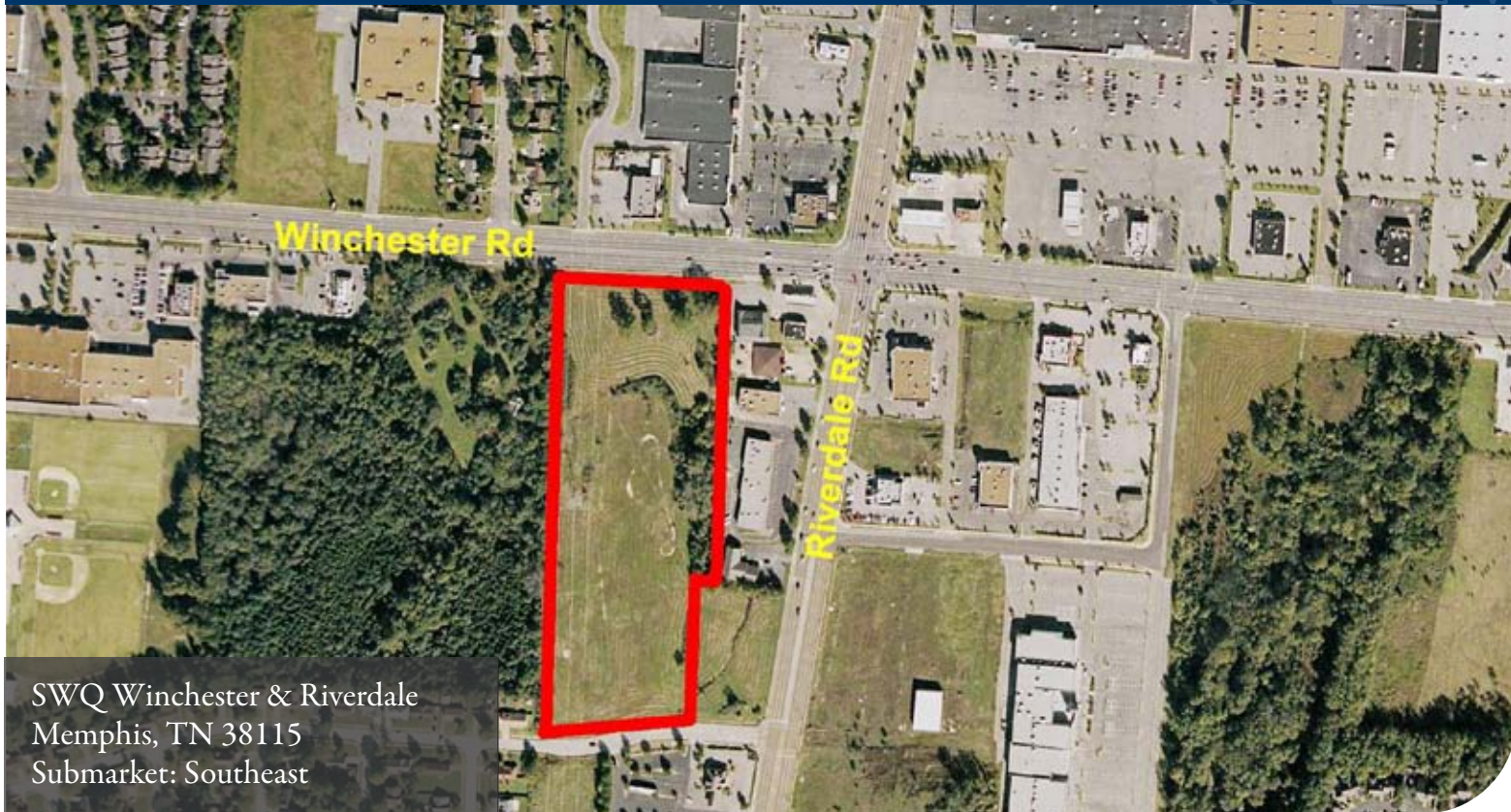


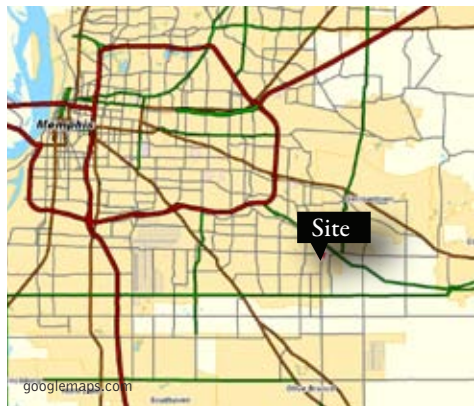
# Winchester & Riverdale



LAND  
Available



SWQ Winchester & Riverdale  
Memphis, TN 38115  
Submarket: Southeast



## Features

- Zoning: SC-1/CP (Plat Book 72, Page 50)
- Property Area: 13.12 +/- acres.
- Location: SWQ Winchester Road and Riverdale Rd.
- Frontage: 460' +/- Winchester; 450' +/- Starkenburg Rd.
- Owner: Russell Estate
- Available Utilities: MLGW – All to the site
- Easements: TVA Transmission Line Easement
- Willingness to Subdivide: Yes
- Covenants, Restrictions: None
- Survey Material: Boundary and Topo
- Area Development Activity: Residential, office, and retail

Contact us

For More Information:

**Matt Weathersby**

901.362.4317

[mweathersby@commadv.com](mailto:mweathersby@commadv.com)

[www.commadv.com](http://www.commadv.com)



Commercial Advisors, LLC 3175 Lenox Park Blvd., Suite 100, Memphis, TN 38115 901-366-6070

No warranty or representation, express or implied, is made as to the accuracy of the information contained herein, and same is submitted subject to errors, omissions, change of price, rental or other conditions, withdrawal without notice, and to any specific listing conditions imposed by our principals.