

# POPLAR & EXETER

7770 Poplar Ave, Germantown, TN 38138 | 385 Corridor Submarket

**OFFICE**  
Lease Space Available

Commercial Advisors is pleased to present this lease opportunity. This is an exceptional opportunity to be in a great location in the heart of Germantown.

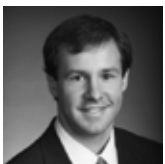


## SPACE AMENITIES

- Second floor availability
- 1,410 +/- square feet
- 3-4 offices, open area, break room plus use of a large conference room not included in the square footage
- Furniture available
- Asking Rate: \$17.75 psf full service
- Located in the heart of Germantown at the northeast corner of Poplar and Exeter.



## FOR MORE INFORMATION:



**Matt Weathersby**  
901.362.4317  
matt@commadv.com



**CUSHMAN & WAKEFIELD®**



**COMMERCIAL ADVISORS**  
INDEPENDENTLY OWNED AND OPERATED

Commercial Advisors, LLC 5101 Wheelis Drive, Suite 300, Memphis, TN 38117 | 901-366-6070

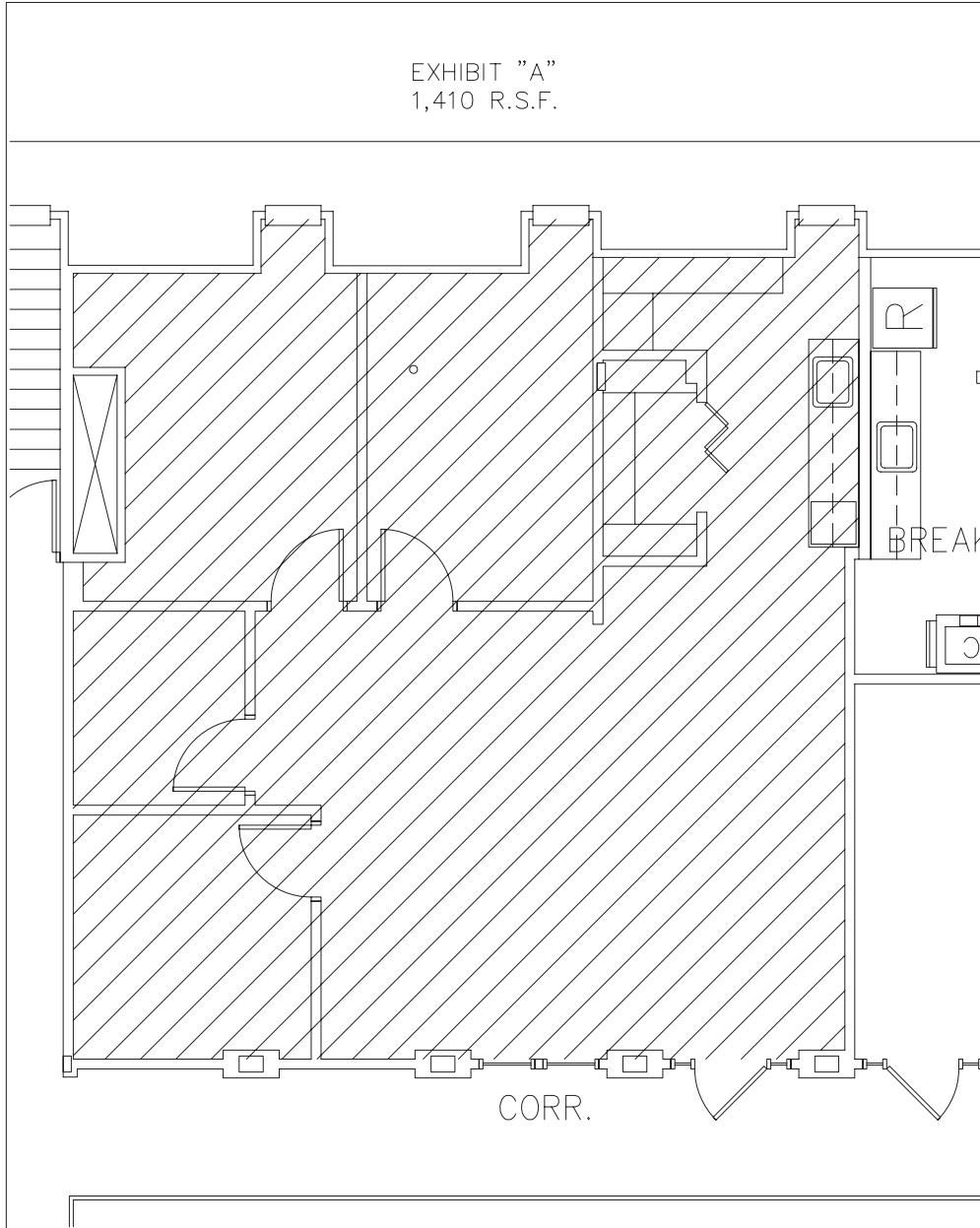
No warranty or representation, express or implied, is made as to the accuracy of the information contained herein, and same is submitted subject to errors, omissions, change of price, rental or other conditions, withdrawal without notice, and to any specific listing conditions imposed by our principals.

[www.commadv.com](http://www.commadv.com)

# POPLAR & EXETER

7770 Poplar Ave, Germantown, TN 38138 | 385 Corridor Submarket

**OFFICE**  
Lease Space Available



Project: DESIGN PLAN	Date: 03.31.10	Rev. Date: XX/XX/XX	Rev. NO. ##	<b>SUNTRUST</b> Corporate Real Estate
Drawing: GERMANTOWN - 2ND FLOOR	Scale: NOT TO SCALE	Drawn: AMW		
	Dwg. Name: TN00455-02			

N:\AutoCAD Files\DWGS for SunTrust\ST TN\TN00455-Germantown Bch\TN00455-02.dwg, 03/31/2010 11:54:19 AM, Adobe PDF



Commercial Advisors, LLC 5101 Wheelis Drive, Suite 300, Memphis, TN 38117 | 901-366-6070

No warranty or representation, express or implied, is made as to the accuracy of the information contained herein, and same is submitted subject to errors, omissions, change of price, rental or other conditions, withdrawal without notice, and to any specific listing conditions imposed by our principals.

[www.commadv.com](http://www.commadv.com)